

## GCI TECH NOTES©

### GCI 的工艺摘要

---

*Volume 2, Number 03 A [Gossman Consulting, Inc.](#) Publication March, 1996*

---

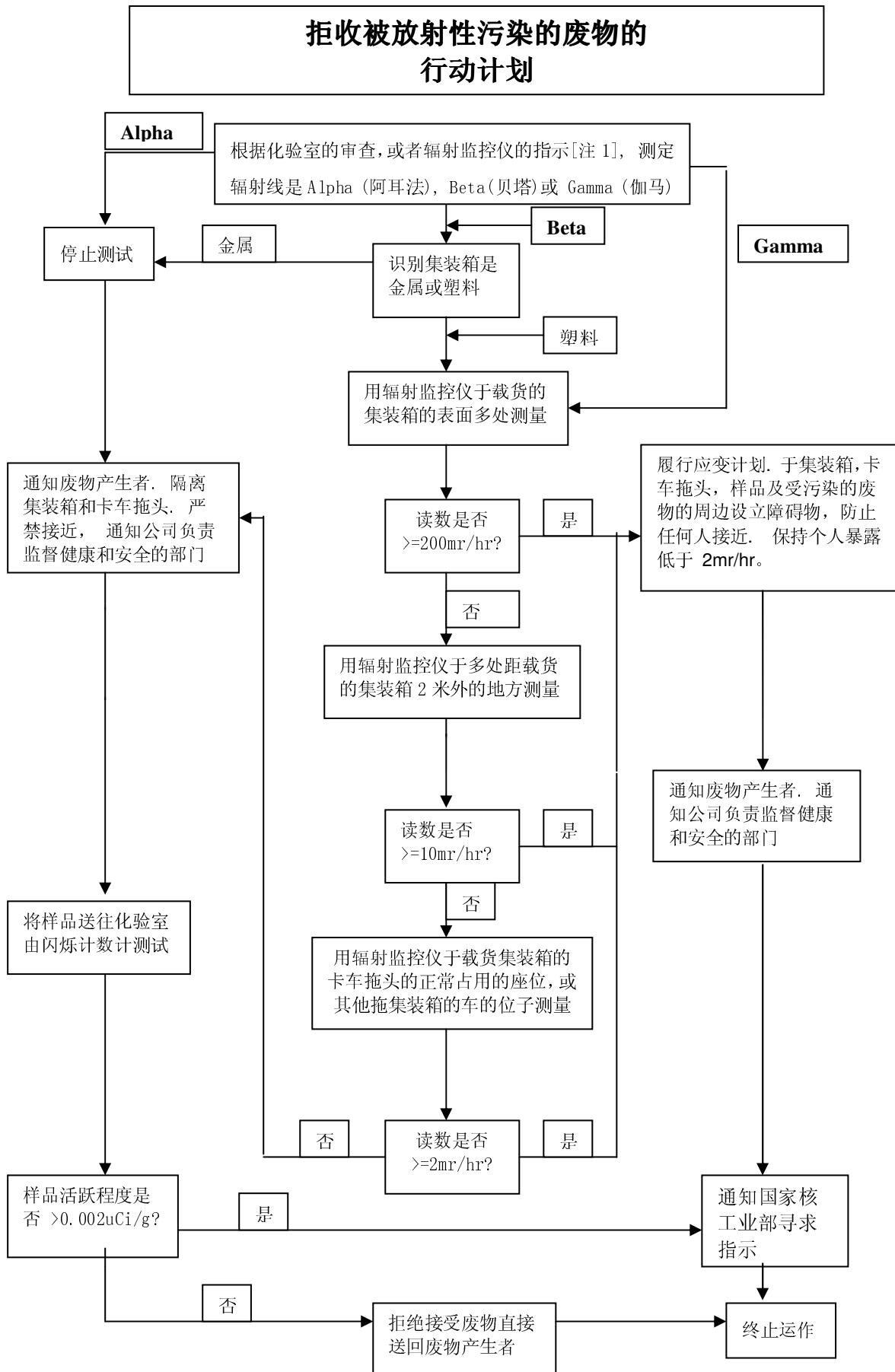
#### 拒收放射性废物的行动计划

##### Radioactive Waste Rejection Action Plan

Systech 环保公司 - 大伟 . 高士曼 和 布鲁斯. 皮德生著  
David Gossman and Bruce Pedersen (Systech Environmental Corporation)

Many facilities which manage hazardous waste have rejection criteria and screening tests to preclude the acceptance of radioactive wastes. Nevertheless, procedures to follow if a shipment containing radioactive wastes is rejected are rarely part of a facility's operating plan. A careful review of U.S. Regulation 10CFR Part 71 reveals a number of regulatory thresholds that affect the legal transport of radioactive materials. The enclosed flowchart can be used as guidance to comply with these regulations. Please refer to the referenced regulations for additional details. Also be aware that permits and state regulations may contain more stringent or additional requirements.

好多设施管理危险废物有一套拒收的准则，包括作放射性审查测试，避免接受放射性物的废物。不过，如果发现交来的废物中含有放射性的物质，就得按程序拒收，那是正常运作程序中稀有的事。仔细查看美国有关管理规章 10CR 71 部分 (Part 71) 披露一些关于合法运输放射性物质法定的门槛。附在下面的流程图可以作为向导如何遵守哪些规章。请参照有关规章更仔细地了解。而且也需要留意许可证和各州的规章，可能有更严格的或者额外的要求。[【注】相信我国也有处理放射性废物的规章。以下的流程图仅供参考而已。]



注意: 如果测到 Gamma 与 Alpha 或者 Beta, 按 Gamma 路线处理, 如果测到 Alpha 与 Beta 按 Beta 路线处理。

